



Lokmanya Tilak Jankalyan Shikshan Sanstha's

LOKMANYA TILAK COLLEGE OF ENGINEERING, NAVI MUMBAI

(An Autonomous Institute Affiliated to University of Mumbai)



Four Programs
accredited by
NBA



Accredited by
NAAC
with 'A' Grade



Permanently
Affiliated by University
of Mumbai



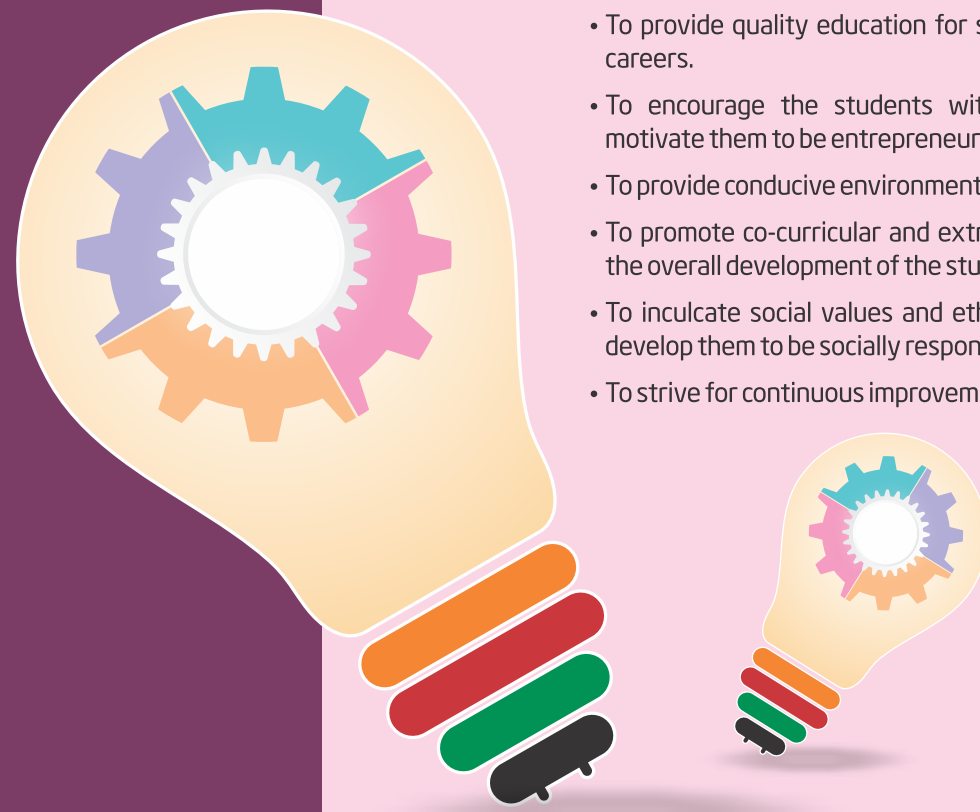
Conferment of
Autonomous
status from UGC



Approved by
AICTE
New Delhi



30
Years
of Excellence



Vision

To create technically competent and ethically responsible professionals capable of providing efficient solutions to the contemporary world.

Mission

We aim to excel in our continual efforts, towards being one of the most recognized institutions, by:

- Providing a conducive environment comprising high-end infrastructure and state-of-the-art laboratory facilities wherein the students, faculty and staff can collectively enhance their technical potential.
- Encouraging innovation through research activities for the benefit of society.
- Developing competent and ethical professionals responsive to change in technology.

LTCE Objectives

- To provide quality education for students to excel in their careers.
- To encourage the students with innovative ideas and motivate them to be entrepreneurs.
- To provide conducive environment for research activities.
- To promote co-curricular and extra-curricular activities for the overall development of the students.
- To inculcate social values and ethics among students and develop them to be socially responsible citizens.
- To strive for continuous improvements in every aspect.

Why Choose LTCE ?

- Offering Honors/Minors Programme in Emerging Technology
- 15000+ Alumni Thriving in Careers worldwide
- 98% Success Rate and rising
- 100% Satisfied Parents



Chairman's Message

An educationist par excellence, the Chairman cherishes and envisions the Sanstha as the live entity of his intellectual aspirations and continual innovations. His unique entrepreneurial approach integrating the values of integrity and technological merit creates a collegial work culture that produces well-educated, highly tech-savvy workforce that is capable of addressing global issues. According to him, India needs the high intellect and technological innovation of young technocrats to lead the country.

Dr. Satish Chaturvedi

D. Litt., Ph.D. (History), M.A. (History)
M.A.(Political Science), M.A. (Hindi Lit.), L.L.B.

Founder & Chairman,
Lokmanya Tilak JankalyanShikshan Sanstha



Secretary's Message

Change is constant, and today's engineers must seize opportunities to drive progress in society and industry. At LTCE, we encourage innovation, resilience, and the pursuit of excellence. Our students are shaped to meet challenges with confidence, creativity, and competence—emerging as professionals ready to lead in a competitive world.

Smt. Abha Chaturvedi

Hon'ble Secretary

Management



Shri. Dushyant Chaturvedi
Hon'ble Director (G.B.)



Smt. Sheetal Chaturvedi
Hon'ble Director



Shri. Abhijeet Deshmukh
Director



Principal's Message

Lokmanya Tilak College of Engineering, a premier institute in Navi Mumbai is committed to fostering innovation, excellence, and leadership in engineering education. Our mission is to empower students with technical expertise, industry-relevant skills and a passion for research. With modern infrastructure, dedicated faculty, and vibrant technical societies, we create a dynamic learning environment.

Dr. Subhash K. Shinde
PhD (Computer Engineering)



Institute Highlights

- 30+ years of glorious existence
- Accredited by NAAC with Grade A
- NBA Accredited Four Programs
- State-of-the-art infrastructure with smart classrooms and modern laboratories
- Highly qualified and experienced faculty
- Strong industry-academia collaboration
- Regular workshops, seminars and guest lectures
- Active student chapters (IEEE, ISTE, IETE, CSI, ISHRAE, etc.)
- Excellent placement record with top recruiters and internship assistance
- Vibrant campus life with technical, cultural and sports events
- Scholarships/Awards for eligible students
- Offering Honors / Minors program

Courses Offered

Bachelor of Technology (B.Tech) Programs

- Computer Engineering
- Computer Science and Engineering (Artificial Intelligence and Machine Learning)
- Computer Science and Engineering (Data Science)
- Computer Science and Engineering (IoT and Cyber Security including Blockchain Technology)
- Electronics and Telecommunication Engineering
- Electrical Engineering
- Mechanical Engineering

Doctoral (Ph.D.) Programs

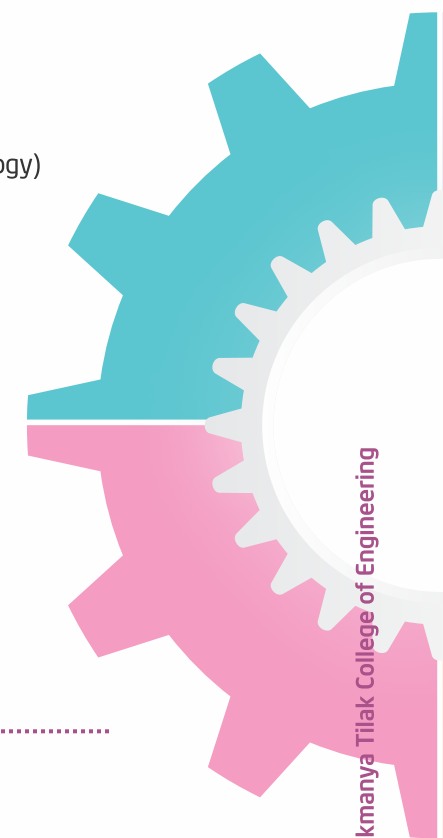
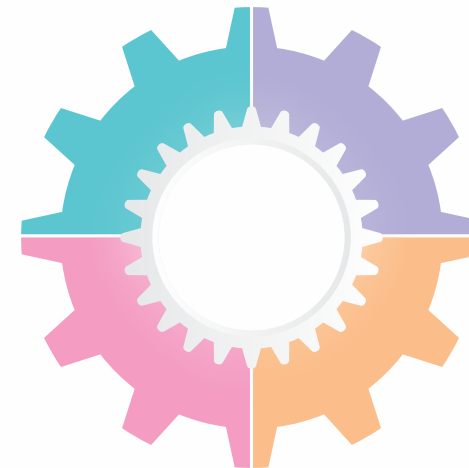
- Computer Engineering
- Mechanical Engineering

Training Programs

- Funded by Unnati SAP centre for Deep Tech through Edunet Foundation
- CyberOps training by NIIT Foundation
- Authorized iLike Lab for conduct of credit courses
- Academic partnership with EC Council
- Talent Battle for campus recruitment training

Achievements

- Star rating for Institute Innovation Cell (IIC)
- Entrepreneurs created through LTCE Incubation and Entrepreneurship Cell
- ISO Certification for Green initiatives
- Faculty members recognized as Board of Chairman, Paper setters at various Universities, Journal/Conference reviewers etc.
- Patents and copyrights by various faculty members
- Students participated in various hackathons, project competitions, sports events etc, at state/national levels and declared winners.
- Students awarded with various scholarships, project grants etc.



Departments

Computer Engineering



The Department of Computer Engineering, established in 1994, is accredited by NBA, and dedicated to academic excellence and industry-driven learning. The department features SAP sponsored Centre of Excellence, empowering students with advanced deep-tech platform technologies while enhancing their employability. This initiative also fosters industry collaboration through capacity-building, enabling faculty and students to work alongside SAP volunteers to address local sustainability challenges. To foster holistic growth, the department actively encourages participation in Computer Engineering Student Association (CESA), providing students with opportunities for technical skill development, leadership training, and professional networking, ensuring they are well-prepared for future career success.

Computer Science & Engineering (Artificial Intelligence & Machine Learning)



Established in AY 2020-21, the Department of Computer Science & Engineering (Artificial Intelligence & Machine Learning) is committed to shaping future-ready professionals by integrating Artificial Intelligence and Machine Learning with fundamental computing principles. With highly experienced faculty and state-of-the-art laboratories, the department fosters an environment of innovation and interdisciplinary learning. Students actively engage in industry-driven projects, hackathons, workshops, and technical events organized by student association (AIMSA) and professional bodies, ensuring practical exposure and skill enhancement. This holistic approach ensures graduates are well-prepared for challenging careers in AI & ML, driving technological advancements and innovation in the field.

Computer Science & Engineering (Data Science)



Department of Computer Science & Engineering (Data Science) established in AY 2020-21, focuses on equipping students with expertise in data analytics, machine learning, and artificial intelligence. The curriculum is designed to provide a strong foundation in statistical modelling, big data technologies, and predictive analytics, ensuring alignment with industry trends. With cutting-edge laboratories and experienced faculty, the department offers a hands-on learning environment for solving real-world, data-driven challenges. To enhance technical and leadership skills, the Data Science Student Association (DSSA) organizes workshops, seminars, hackathons, and industry interactions, providing students with valuable networking and professional growth opportunities. By fostering critical thinking, innovation, and problem-solving skills, the department prepares graduates for successful careers in the dynamic field of Data Science across diverse industries.

Computer Science & Engineering (IoT & Cyber Security Including Blockchain Technology)

The department established in AY 2020-21, is dedicated to developing future-ready professionals in IoT, Cyber Security, and Block chain Technology. The curriculum combines theoretical foundations with hands-on learning, ensuring students stay ahead in the rapidly evolving digital landscape. With state-of-the-art labs, experienced faculty, and industry collaborations, students gain practical exposure to secure computing, decentralized systems, and emerging smart technologies. The department fosters research and innovation, equipping students with problem-solving and analytical skills to tackle real-world challenges. Beyond academics, students participate in seminars, workshops, and industry activities, enhancing leadership and teamwork through the student association (CSESA). The department equips graduates with industry-relevant skills for successful careers in cyber security, IoT, and block chain, driving technological and societal progress.



Electronics and Telecommunication Engineering

The department is established in 2001, accredited by NBA and is committed to providing quality education through highly qualified faculty and state-of-the-art laboratories, fostering a dynamic and competitive learning environment. Through associations with IEEE, IETE, and ISTE, students gain access to technical expertise, industry exposure, and research opportunities. Additionally, the Electronics and Telecommunication Students' Association (ETSA) plays a crucial role in organizing technical events, workshops, and extracurricular activities, enhancing students' professional and leadership skills. Beyond classroom learning, students are encouraged to participate in seminars, industrial visits, value-added programs, paper presentations, and project competitions, helping them develop practical skills and innovative problem-solving abilities. The department provides an enriching platform for students to tackle real-world challenges, ensuring they emerge as skilled professionals and valuable contributors to society.



Electrical Engineering

Established in 1995, the Department of Electrical Engineering is dedicated to delivering quality education, fostering research, and promoting ethical responsibility among students. With a strong focus on innovation and industry collaboration, the department equips students with technical expertise and problem-solving skills essential for the evolving energy and automation sectors. To enhance professional development, student-led committees such as SCEE organize technical and extracurricular activities, while the IEEE Committee drives research and technological advancements. The ISTE Committee further strengthens industry collaboration and technical education. The department boasts well-equipped laboratories, including Electrical Machines Labs, Protection & Switchgear Lab, Power Electronics & Measurement Lab, Control System & Microprocessor Lab, and Project & Research Labs, ensuring comprehensive hands-on learning and research opportunities.





Department of Mechanical Engineering

Established in 1994 with a commitment to excellence, the Department of Mechanical Engineering has been accredited twice by NBA, with the latest accreditation in May 2024. The department offers a comprehensive curriculum covering Design, Thermal, Automobile, Manufacturing, Automation, and CAD/CAM, aligning with industry demands to equip students with cutting-edge skills. With highly qualified faculty, state-of-the-art laboratories, and advanced computational facilities, students gain hands-on experience in specialized areas such as Additive Manufacturing, Mechatronics, Electric Vehicles, and Unmanned Aerial Vehicles. Through MOUs with leading industries, students benefit from training programs, internships, industrial visits, and collaborative projects. The department actively engages with professional societies such as SAE, ISHRAE, ASHRAE, ISTE, and IIE, fostering technical expertise and innovation. Additionally, the Mechanical Engineering Students' Association (MESA) organizes technical events, workshops, and competitions, enhancing students' leadership and practical skills. With a strong focus on research, innovation, and industry collaboration, the department ensures that graduates are well-prepared for global challenges and successful careers in engineering and technology.



Department of First Year Engineering

The First Year Engineering Department lays the groundwork for students' academic pursuits in the field of engineering. It plays a crucial role in guiding young learners by providing core knowledge in essential subjects like mathematics, physics, chemistry, programming, and fundamental engineering concepts. Dedicated to fostering curiosity, innovation, and critical thinking, the department prioritizes both academic excellence and the holistic development of students. It emphasizes not only technical skills but also ethical values, communication abilities, and professional conduct. Supported by qualified faculty members, modern laboratory facilities, and a student-centric learning environment, the department helps bridge the gap between school education and the demands of the engineering profession.



Professional Body Chapters and Cells

Training & Placement Cell

The Training and placement (T &P) Cell of Lokmanya Tilak College of Engineering relentlessly works towards positioning and collaborating with potential recruiters, large organizations and companies and organizes numerous On Campus and Pool campus drives each year. In order to ensure maximum placements, the T & P Cell has given new thrust to revamp its strategies and mode of operation.

Several training programs are organized in order to enhance the employability of the students in the areas of aptitude, soft skills, technical and communication skills. The T &P Cell regularly organizes several activities such as Mock Aptitude test, Mock Group discussion, Personal Interview(PI), Soft Skill Workshops and Motivational Seminars for the Employability Enhancement of the students.

The Training and Placement Cell of the college adopts a dynamic approach with an objective to achieve an all-round and multifaceted personality development for its students. With firm belief in the approach, students are encouraged to develop their personal, interpersonal, professional skills and behaviour.

T&P cell also provides opportunity of summer internships and industrial projects to all the interested students. Career counselling unit of T&P Cell helps students in getting necessary information to prepare for different careers after Engineering in India and abroad.



Placement Highlights

Highest Package 33.25 Lakhs	Average Package 5.5 Lakhs	Placement Assistance 100%	Average Placement 70%
--------------------------------	------------------------------	------------------------------	--------------------------

Institute Innovation Cell (IIC)

The Institution's Innovation Council (IIC) at LTCE is established under the Ministry of Education's Innovation Cell (Government of India) to promote a culture of innovation and entrepreneurship among students and faculty.

IIC aims to nurture creative thinking and develop entrepreneurial skills through regular activities such as:

- Innovation and Entrepreneurship Workshops
- Ideation and Prototype Development Competitions
- Start-up and Entrepreneurship Mentoring Sessions
- Interaction with Successful Innovators and Industry Experts
- Participation in National Innovation Contests and Hackathons

Through the IIC, LTCE empowers students to transform ideas into impactful solutions, fostering a dynamic ecosystem of innovation, creativity, and leadership on campus.

National Service Scheme (NSS) Cell

NSS Cell at LTCE plays a vital role in instilling the spirit of social responsibility and community service among students. NSS encourages students to contribute selflessly toward the betterment of society. Through various initiatives like cleanliness drives, health awareness programs, blood donation camps, tree plantation, rural development activities, and workshops, the NSS unit empowers students to become socially conscious citizens and leaders of tomorrow. By participating in NSS, students not only enhance their leadership, teamwork, and organizational skills but also build a strong foundation of empathy, ethics, and public



Music Club

The Music Club at LTCE is a vibrant platform that nurtures musical talent and fosters creativity among students. Whether it's vocal, instrumental, or composing, the club brings together passionate musicians to share their love for music and grow together. The club organizes performances during college festivals, cultural events, and special occasions, providing students with opportunities to showcase their skills and collaborate across genres.



English Club

The English Club at Lokmanya Tilak College of Engineering is a platform dedicated to enhancing students' communication, leadership, and interpersonal skills. Established in 2013 and reimagined in 2019-20, the club focuses on personality development alongside language fluency. Through weekly activities, the club sharpens leadership, negotiation, and public speaking skills, preparing students for academic and professional success. The club's flagship event, the Model Business Summit, simulates corporate environments, encouraging critical thinking, collaboration, and real-world problem-solving. The English Club inspires students to become confident, articulate, and socially aware leaders.



Women's Development Cell (WDC)

The WDC at LTCE promotes gender equality, empowers women, and creates a safe, inclusive campus. Through workshops, guest lectures, and training sessions, it fosters leadership, confidence, and personal growth, helping students thrive both personally and professionally.



Incubation & Entrepreneurship Cell

The Incubation & Entrepreneurship Cell at LTCE nurtures innovation and entrepreneurial skills among students. It offers mentorship, workshops, and startup support to help students transform ideas into real ventures. The Cell empowers future leaders to innovate, take risks, and create their own path in the dynamic world of startups.



Marathi Vangmayi Mandal

The Marathi Vangmayi Mandal at LTCE promotes Marathi language, literature, and culture through literary events, competitions, and cultural activities. It provides a platform for students to celebrate creativity, tradition, and regional pride.



Annual Festival : Zephyr

Zephyr, the annual festival of LTCE, is a vibrant celebration that brings together the spirit of culture, technology, and sports. The festival offers a dynamic platform where students showcase their talents through a diverse range of cultural performances, technical competitions, and thrilling sports events. The festival provides a vibrant platform for students to participate in a wide array of technical competitions, cultural performances, workshops, sports and interactive sessions. It fosters leadership, teamwork, and creativity, offering students an opportunity to showcase their talents beyond academics. Through Zephyr, LTCE emphasizes holistic development, inspiring students to think creatively, collaborate effectively, and contribute meaningfully to society.

Cultural Events : Cult Zephyr

Zephyr showcases an array of cultural activities including music, dance, rap, fashion shows, literary competitions, and creative arts. It provides a vibrant stage for students to express their creativity and passion.



Technical Events: Tech Zephyr

A highlight of Zephyr is its diverse range of technical contests, workshops, and exhibitions. These events aim to spark innovation, problem-solving, and technological exploration among students across various domains of engineering and technology.



Sports Events: Sports Zephyr

Physical fitness and team spirit are celebrated through various sports competitions that encourage healthy competition and camaraderie among students.



Facilities

Seminar Hall



Conference Room



Classroom



Laboratories



Library



Auditorium



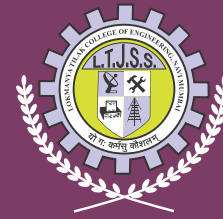
Sports/Extracurricular Facilities





Lokmanya Parivar / LTJSS Institutions

Name of the Institute	Level
Priyadarshini College of Engineering, Hingna Road, Nagpur (B. Tech., M. Tech, Ph. D.)	Degree / Post Graduate/ Doctorate
Lokmanya Tilak College of Engineering, Navi Mumbai (B. Tech., Ph. D.)	Degree / Doctorate
Lokmanya Tilak Institute of Architecture & Design Studies, Navi Mumabi.	Degree
Priyadarshini Bhagawati College of Engineering, Harpur, Nagpur (B. Tech., M. C. A., M. Tech)	Post Graduate/Degree
Priyadarshini J. L. College of Engineering, Nagpur (B. E.)	Degree
Priyadarshini Institute of Architecture and Design Studies, Nagpur. (B. Arch., B. Arch. (ID), M. Des.)	Post Graduate / Degree
Priyadarshini Lokmanya Tilak Institute of Management Studies & Research, Nagpur (M.B.A., M.C.M., B.B.A.)	Post Graduate
Priyadarshini J. L. College of Pharmacy (M. Pharm, B. Pharm.), Nagpur	Post Graduate / Degree
Priyadarshini J. L. Chaturvedi College of Pharmacy (D. Pharm.), Nagpur	Diploma
Bhavani Industrial Training Centre, Nagpur (I.T.I.)	Diploma
Jyotiba College of Physical Education, Nagpur (M. P. Ed., B. P. Ed., B. P. E.)	Post Graduate / Degree
Priyadarshini College of Education, Nagpur (D. Ed., B. Ed., M. Ed.)	Degree
Pallavi College of Diploma in Education, Nagpur (D. Ed.)	Diploma
Jyotiba High School, Junior College (MCVC) , Nagpur	Jr. College
Bhagwati Girls High School, Junior College (MCVC) Nagpur	Jr. College
Priyadarshini Nagpur Public School, (CBSE) Nagpur	High school
Priyadarshini Public School, Nagpur	High school
Late Anand Choubey Memorial High School, Nagpur	High school
Pallavi Prathamc Marathi Medium Vidyalaya, Nagpur	Primary
Bhagwati Girls Prathamc Vidyalaya, Nagpur	Primary
Sant. Jagnade Maharaj Prathamc Shala, Nagpur	Primary
Sant. Jagnade Maharaj High School, Nagpur	Primary
Rajiv Uccha Prathmik Shala, Nagpur	Primary
Tilak Pradhmic Vidyalaya, Nagpur	Primary
Priyadarshini Convent, Nagpur	Pre Primary
Lokmanya Tilak International School, Navi Mumbai	Pre Primary



Lokmanya Tilak Jankalyan Shikshan Sanstha's
**LOKMANYA TILAK COLLEGE OF
ENGINEERING, NAVI MUMBAI**
(An Autonomous Institute Affiliated to University of Mumbai)



Sector 4, Vikas Nagar, Koparkhairane, Navi Mumbai - 400 709
Phone : + 91-022-2754-1005 / 06.
Email: principal@ltce.in, principal.ltce@gmail.com Website : www.ltce.in

Follow Us On



www.facebook.com/LTCEofficial



www.youtube.com/@ltceofficial8789



www.instagram.com/ltce_official



www.x.com/LTCE_Official